

S.m. WAHITNADIHAGEAMVSAMAQAAQKWRERIPYEKTSVSVGTPVADQFADE-----EAEDQVD 184
N.c. WAHITNADIHAGEAMVSAMAQAAQKWRERIPYEKTSVSVGTPVADQFADE-----EAEDQVE 186
T.r. WAHIVNVNMVPGKASVASLAQGAQRWLERYPCEVKTSVTVGTPPTMDSFDDDDADSRDAEPAGAVN 186
A.c. WAHIVNVNMVPGKASVTSLANAAAKWLERYPYEKTSVTVGTPRNTDEDDD-DEDDGNAGEMER 185
A.n. WAHIINCSILPGEGLVEALAQATASAPDFSYPG----- 148
S.c. WADITNAHGVVPGGIVSGLKQAA---EEVTKE----- 143
A.t. WADIINAHVISGPGIVDGLKLGMPR----- 127
B.t. WADLVNAHAVPGSGVVKLVLEEVGLPL----- 127
* * * *

S.m. ELRKIVPRENSTSKEKDTDGRKGSIVSITTVTQTYEPADSPRLAKTISEGDEAVFPGIEEAPLD 248
N.c. ELRKVVRETSTT-TKDTDGRKSSIVSITTVTQTYEPADSPRLVKTISEDDEMVFPGIEEAPLD 249
T.r. GMGSIGVLDKPIYSNRSGDGRKGSIVSITTVTQQYESVSSPRLTKAIAEGDESFLFPGIEEAPLS 250
A.c. SHTFGLNGNNGVPIKESDGRKGSIVSVTTVTQQYESAHSRPLTKTIAEEGDMLLAGLEEPPLN 249
A.n. -----E 149
S.c. -----P 144
A.t. -----G 128
B.t. -----H 128

S.m. RGLLILAQMSSKGCLMDGKYTWECVKAARKNKDFVMGYVAQQNLNGITKEDLAPGYEDGETSTE 312
N.c. RGLLILAQMSSKGCLMDGKYTWECVKAARKNKDFVMGYVAQQNLNGITKEALAPSYEDGESTTE 317
T.r. RGLLILAQMSSQGNFMNKEYTQASVEAAREHKDFVMGFISQETLN----- 295
A.c. RGLLILAQMSSAGNFMNAEYEQACVEAAREHKDFVMGFVSQEALN----- 294
A.n. RGLLILAEMTSKGSLATGQYTTSSVDYARKYKNFVMGFVSTRSLGEVQSEVSS----- 202
S.c. RGLLMLAEELSCKGSLATGEYTKGTVDIAKSDLDFVIGFIAQRDMGG----- 190
A.t. RGLLLLAEMSSAGNLATGDYTAATAVKIADAHSDFVMGFISVNPASWKC----- 176
B.t. RACLIVAEMSSAGTLATGSYTEAAVQMAEEHSEFVIGFISGRVSMK----- 175
* * * * * * * * * *

S.m. EEAQADNFHMTPGCKLPPPGEEAPQ-----GDGLGQQYNTPDNLVNIKGTDIAIVGRGIITAS 371
N.c. EEAQADNFHMTPGCKLPPPGEEAPQ-----GDGLGQQYNTPDNLVNIKGTDIAIVGRGIITAA 372
T.r. -TEPDDAFIHMTPGCQLPPEDEDQQTNGSVGGDGGQQYNTPHKLIAGSDIAIVGRGIKAS 358
A.c. -SQPDDDFIHMTPGCQLPPEHEEDAE---LRGDGKQQYNTPEKLIGVCGADIVIVGRGIKAG 354
A.n. -PSDEEDFVVFVTTGVNISSK-----GDKLGQQYQTPASAIG-RGADFI IAGRGIYAAP 253
S.c. -RDGEYDWLIMTPGVGLDDK-----GDALGQQYRTVDDVVS-TGSDIIIVGRGLFAKG 241
A.t. -GYVYPSMIHATPGVMVKG-----GDALGQQYNTPHSVITERGSDIIIVGRGIKAE 228
B.t. -----PEFLHLTPGVQLEAG-----GDNLGQQYHSPQEVIGKRGSDIIIVGRGIASA 223
* * * * * * * * * *

S.m. -DPPAEAERYRRKAWKAYQDRRERLA	396	S.m. = <i>Sordaria macrospora</i> (Z70291)
N.c. -DPPAEAERYRRKAWKAYQDRRERLA	397	N.c. = <i>Neurospora crassa</i> (M13448)
T.r. -DPVEEAERYRSAAWKAY---TERLLR	381	T.r. = <i>Trichoderma reesei</i> (S14132)
A.c. -DLQHEAERYRSAAWKAY---TER-VR	376	A.c. = <i>Acremonium chrysogenum</i> (P14017)
A.n. -DPVQAAQQYQKEGWEAYLARVGGN	277	A.n. = <i>Aspergillus niger</i> (P07817)
S.c. RDAKVEGERYRKAGWEAYLRRCGQQN	267	S.c. = <i>Saccharomyces cerevisiae</i> (P03962)
A.t. -NPAETAHEYRVQWEAYLEKCSQ	251	A.t. = <i>Arabidopsis thaliana</i> (Q42586)
B.t. -NQLAAKMYRKAWEAYLSRLAV	246	B.t. = <i>Bos tauris</i> (P31754)

* * * *

Figure 1.

Comparison of amino acid sequences from OMPD genes from different eukaryotes. The sources and corresponding accession numbers (EMBL data library) are given at the end of all sequences. In the cases of *Arabidopsis thaliana* and *Bos tauris*, only the OMPD domains of the polypeptides were used. Asterisks below the sequence indicate amino acid residues, which are conserved in all sequences. Dashes represent gaps introduced to obtain the best alignment.

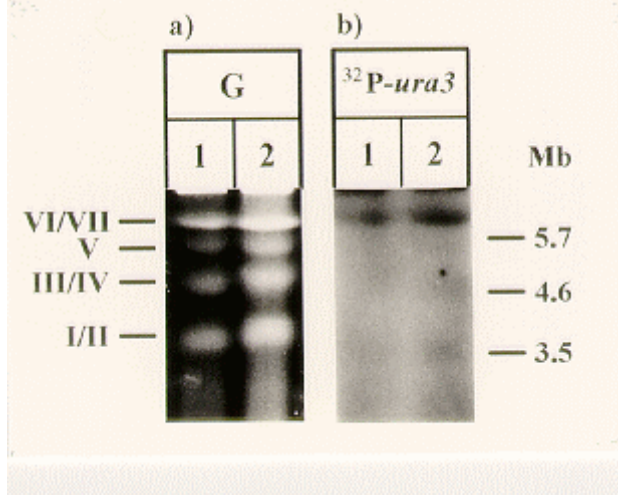


Figure 2. Chromosomal mapping of the *ura3* gene from *S. macrospora*. a) Chromosomes of two *S. macrospora* wild type strains (isolate S1957, lane 1; isolate L3346, lane 2) were separated using pulsed field gel electrophoresis. Roman numerals indicate positions of *S. macrospora* chromosomes. On the right, sizes of marker chromosomes are given in Mb. b) Autoradiograph showing the chromosomal localisation of the *ura3* gene. The filter bound chromosomal DNA was probed with a DNA fragment representing the open reading frame and adjacent regions of the *ura3* gene.

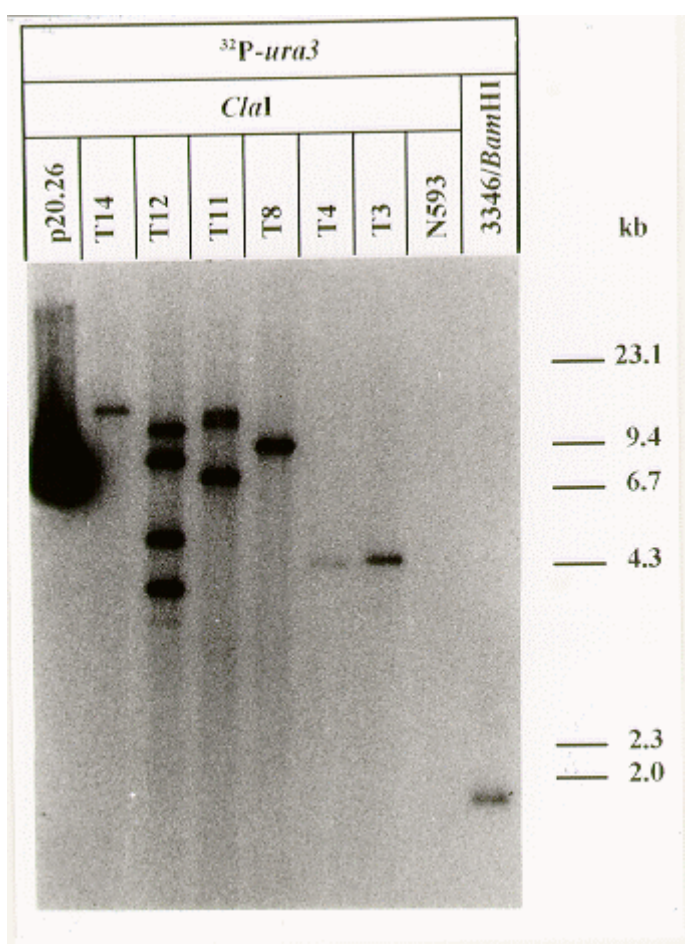


Figure 3. Autoradiograph from a Southern hybridization experiment with DNA from *A. niger* transformants. DNA from six transformants (T3, T4, T8, T11, T12 and T14) and from the recipient strain N593 was digested with *ClaI* and separated by gel electrophoresis. The Southern blot was probed with a DNA fragment, representing the open reading frame and adjacent regions of the *ura3* gene. As a control, the transforming plasmid p20.26 and DNA from a *S. macrospora* wild type strain (L3346) were used. Sizes of marker fragments are given on the right margin.

- [Return to the FGN 45 Table of contents](#)
- [Return to the FGN main page](#)
- [Return to the FGSC Main page](#)